



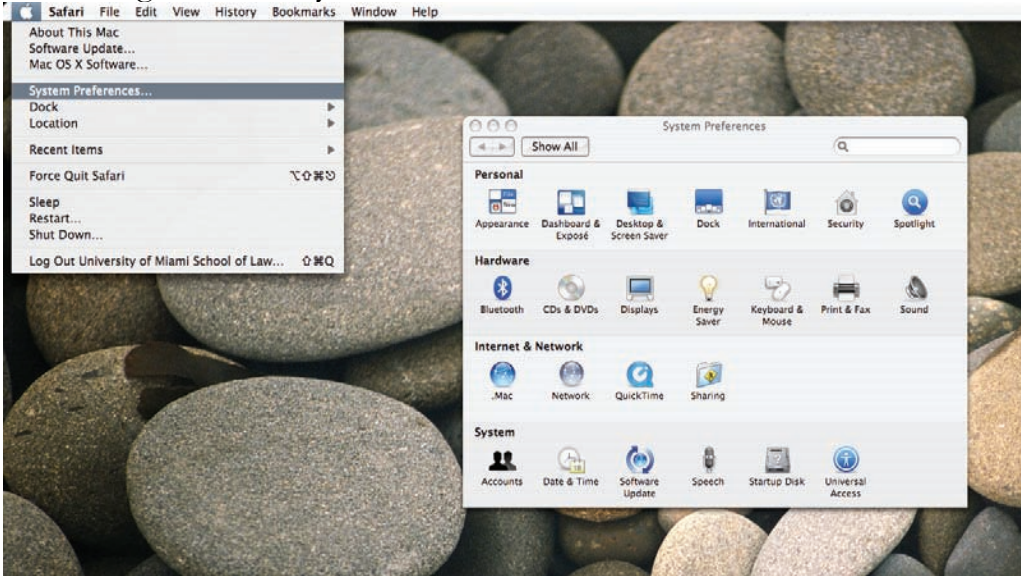
## WELCOME TO WEBPRINT APPLE EDITION

The **University of Miami School of Law** offers students, faculty, and staff, **Wireless** capability to access and print to various network printers.

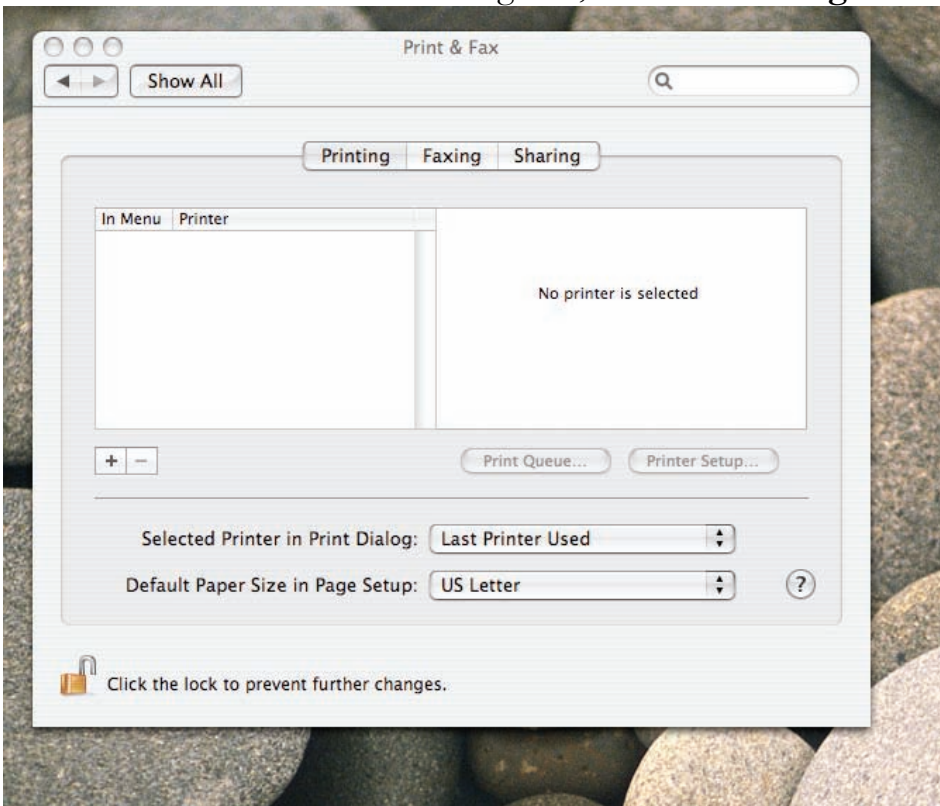
You may now be able to print from any laptop properly registered with **WirelessCanes**, from within the Law School compound and various locations within the University campus.

# ACCESSING WEBPRINT

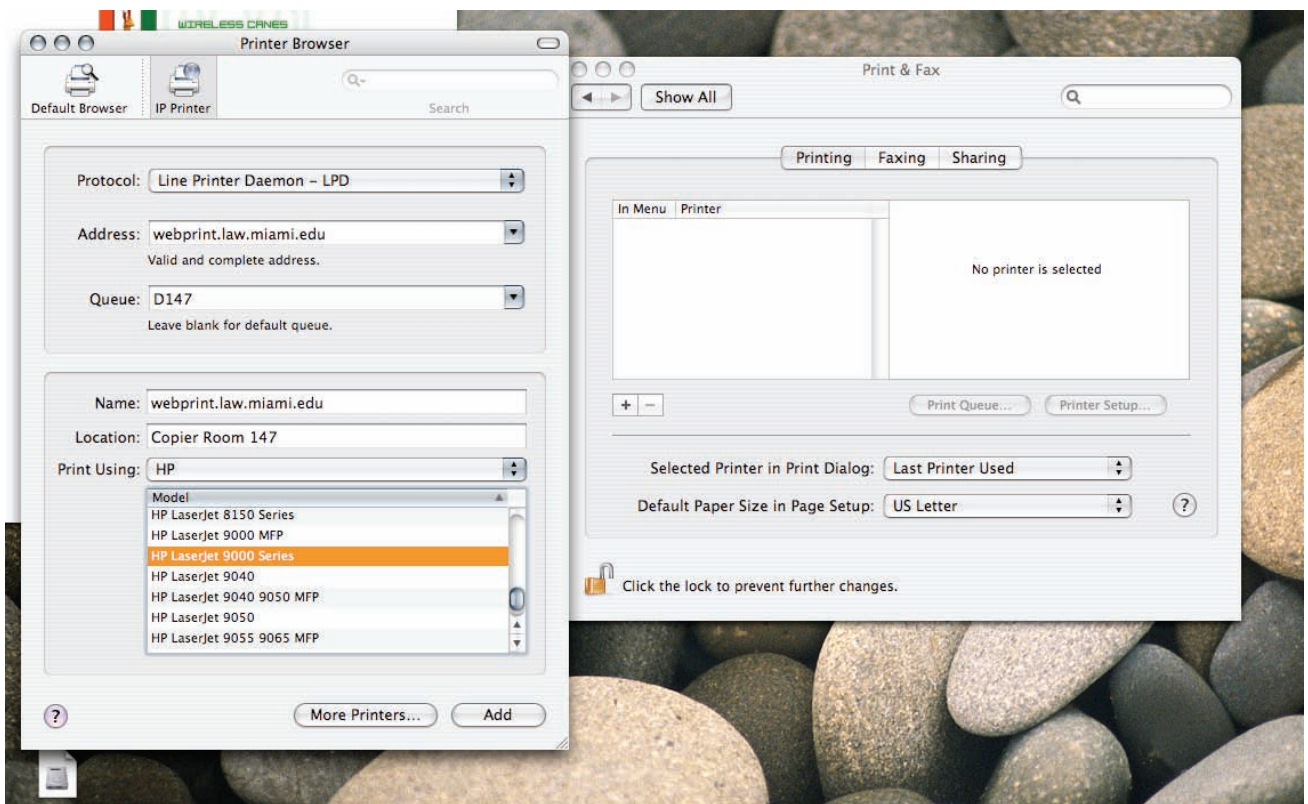
1. To begin, access Systems Preference and choose **Printer & Fax**.



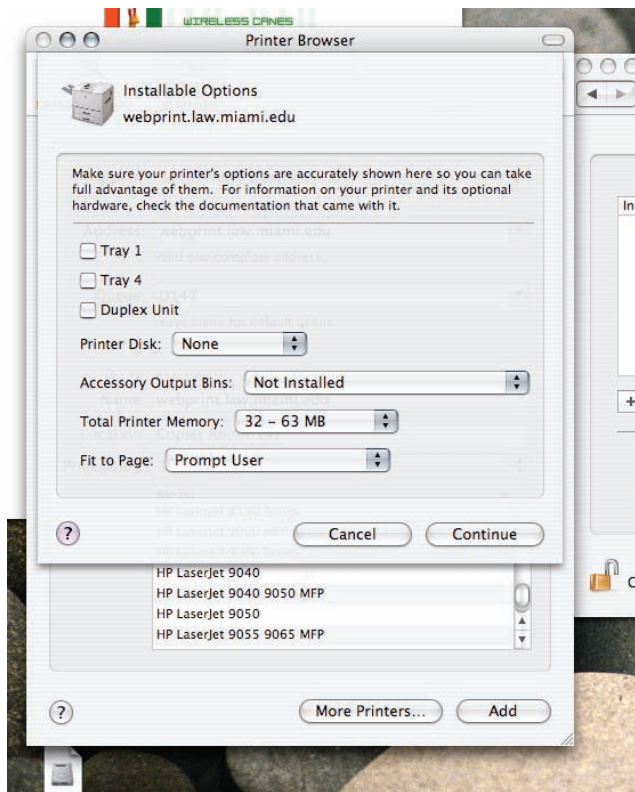
2. Once in the **Print & Fax** dialog box, click on **Printing**.



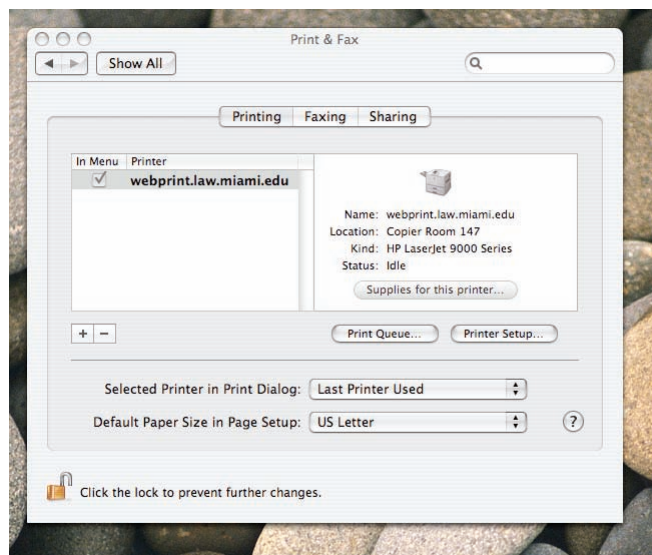
3. Once there click on the + sign to add a printer.
  - a. Make sure **IP Printing** has been selected.
  - b. In **Protocol**, choose **Line Printer Daemon – LPD**.
  - c. In **Address** type **webprint.law.miami.edu**.
  - d. In **Queue**, type in the printer you wish to add.
  - e. In **Name**, type in the name you would like to give the printer.
  - f. In **Location**, type in the printer location. For example, D147 could be Copier Room D147.
  - g. In **Print Using**, select the **type of Printer**. Normally it would be an HP, and **select the Model**.
  - h. You can then select **Add**.



4. If you receive a **Printer Browser** screen asking to further configure your printer with **Installable Options**, just click **Continue**.



5. You will then return to the **Printer & Fax** screen, and the printer will be installed. You will need to repeat these steps for each printer that you would like to add.



<b><u>1st Floor</u></b>		
<b>Location</b>	<b>Queue Name</b>	<b>Printer Model/Driver</b>
<i>Room C118</i>	C118-1	HP 4200
<i>Room C118</i>	C118-2	HP 4200
<i>Room C118</i>	C118-3	HP 4300
<i>Florida Collection D135</i>	D135	HP 9050
<i>Copier Room D147</i>	D147-A	HP 9000
<i>Copier Room D147</i>	D147-B	HP 9050
<b><u>2nd Floor</u></b>		
<i>Copier Room D232</i>	D232-A	HP 9000
<i>Copier Room D232</i>	D232-B	HP 9050
<b><u>3rd Floor</u></b>		
<i>Copier Room D332</i>	D332-A	HP 9000
<i>Copier Room D332</i>	D332-B	HP 9050
<i>Copier Room G391</i>	G391	HP 9000