

WELCOME TO CANENET

WirelessCanes - a wireless Ethernet connection allowing UM employees and students to connect to our network via wireless technology from the **Law School**, the **Law Library**, and various locations on campus. WirelessCanes can be accessed by any UM employee or student using a Wireless LAN device such as a laptop.

FINDING YOUR ADAPTER ADDRESS

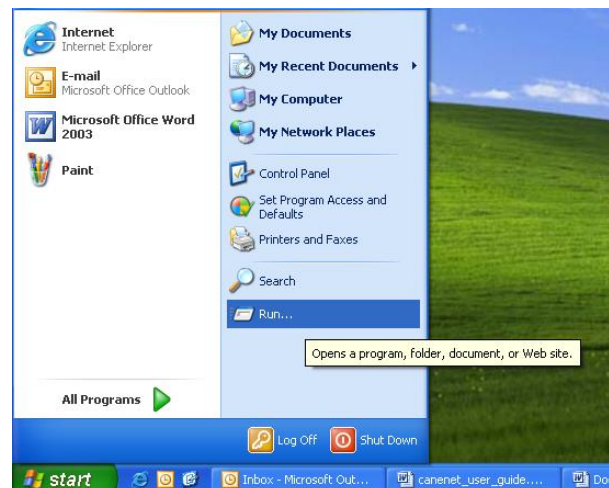
In order to complete the **Canenet Network Access** application, you will have to find your **Adapter Address (the MAC address)** of your Wireless Ethernet card.

The physical address is a 12 character hexadecimal number (A-F, 0-9), usually beginning with 00 or 08, separated by dashes (xx-xx-xx-xx-xx-xx). The **Adapter Address** may be located on the back of the external Ethernet card and/or Wireless Ethernet card. For internal cards or if you cannot locate the **MAC address** follow these steps:

(If you have an external Ethernet card or wireless Ethernet card please insert it into your computer.)

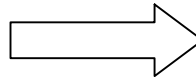
WINDOWS XP:

- Click on the **Start** button, and then click on **Run**.





- This will bring up a DOS Command Prompt, type in **ipconfig/all** and press **Enter**.



For your Wireless Ethernet adapter address look for a description that has 'Wireless Ethernet Adapter' or similar in it. An Adapter Address that begins with 44 is an incorrect address. Your IP Address is not your Adapter Address either.

```
C:\WINDOWS\system32\cmd.exe
Microsoft Windows XP [Version 5.1.2600]
(C) Copyright 1985-2001 Microsoft Corp.

C:\Documents and Settings\Yasser O. Navarrete>ipconfig/all

Windows IP Configuration

Host Name . . . . . : Notebook
Primary Dns Suffix . . . . . :
Node Type . . . . . : Broadcast
IP Routing Enabled. . . . . : No
WINS Proxy Enabled. . . . . : No
DNS Suffix Search List. . . . . : gateway.2wire.net

Ethernet adapter Wireless Network Connection:

Connection-specific DNS Suffix . : gateway.2wire.net
Description . . . . . : Intel(R) PRO/Wireless 2200BG Network
Connection
Physical Address. . . . . : 00-0E-35-D4-8D-EF
Dhcp Enabled. . . . . : Yes
Autoconfiguration Enabled . . . . . : Yes
IP Address. . . . . : 192.168.1.101
Subnet Mask . . . . . : 255.255.255.0
Default Gateway . . . . . : 192.168.1.254
DHCP Server . . . . . : 192.168.1.254
DNS Servers . . . . . : 192.168.1.254
Lease Obtained. . . . . : Thursday, August 11, 2005 6:59:07 PM
Lease Expires . . . . . : Friday, August 12, 2005 6:59:07 PM

Ethernet adapter Local Area Connection:

Media State . . . . . : Media disconnected
Description . . . . . : Broadcom 440x 10/100 Integrated Cont
roller
Physical Address. . . . . : 00-0F-1F-B0-FA-A3

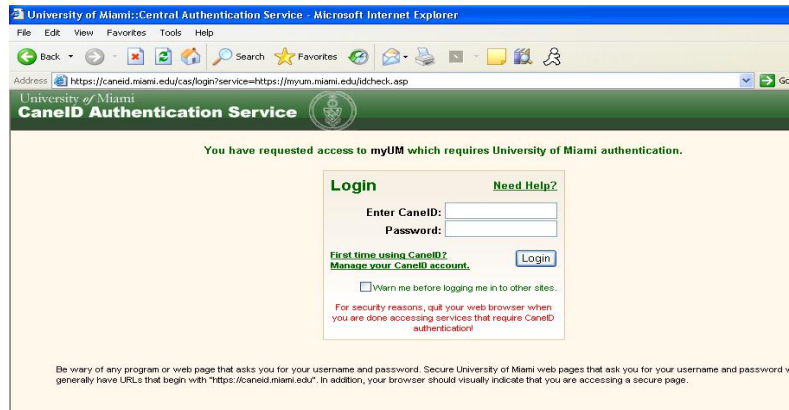
C:\Documents and Settings\Yasser O. Navarrete>
```

APPLYING FOR CANENET ACCESS

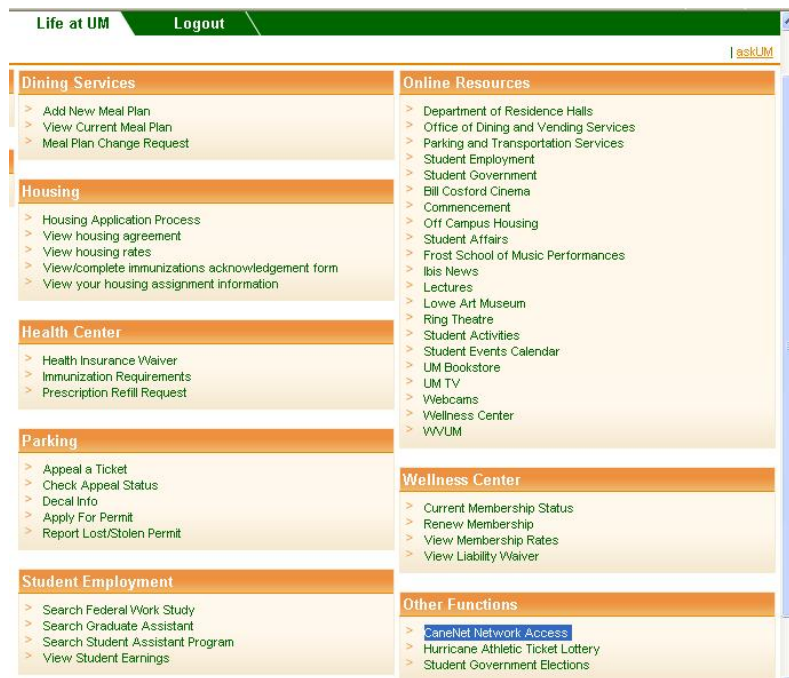
The process for applying for CaneNet access is through the **MyUM** system. The MyUM system can be accessed from any on campus computer or any remote computer that has Internet access.

Follow these steps to apply for access:

1. Go to <http://myum.miami.edu>
2. Enter your UM ID (C#) or SSN and EASY Password. If you do not have a MyUM ID/Password, click on **First time using CaneID?** and then login.



- From the **MyUM** Main Menu, click on the **Life at UM** Menu tab, scroll down to **Other Functions**, and click on **Canenet Network Access**.

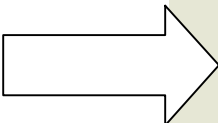


- Read prompt. If agreeable, click **Continue**.
- Enter your **Adapter Address** (as follows: xx-xx-xx-xx-xx-xx) for WirelessCanes Access then click on **Submit Changes**.

DEVICE MANAGER

Please enter MAC addresses below in the form **hh:hh:hh:hh:hh:hh** or **hh-hh-hh-hh-hh-hh** or **hhhhhhhhhhhh** or **hhhh.hhhh.hhhh**, h being 0-9 or a-f. [How to find a MAC address!](#)

| REGISTERED DEVICES | DELETE DEVICES | MOVE DEVICES |
|--|---|--|
| CaneNet Access (Wired) <small>Note: Maximum of two CaneNet devices allowed.</small> | | |
| MAC Address: <input type="text"/> | | |
| MAC Address: <input type="text"/> | | |
| WirelessCanes Access (Wireless) <small>Note: Maximum of two WirelessCanes devices allowed.</small> | | |
| MAC Address: <input type="text"/> | Select To Delete <input type="checkbox"/> | Select To Move To CaneNet <input type="button" value="v"/> |
| MAC Address: <input type="text"/> | | |



WirelessCanes Authentication Access

Check this box if you want to receive authentication privileges to access WirelessCanes (without owning or registering your wireless device).

Dial-Up Canes Access

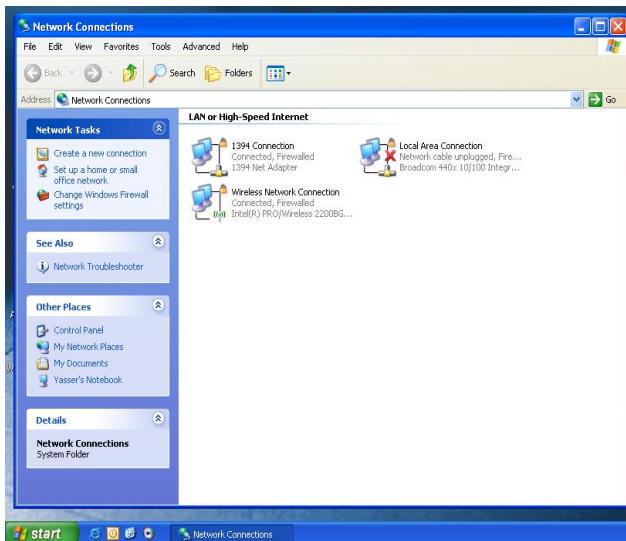
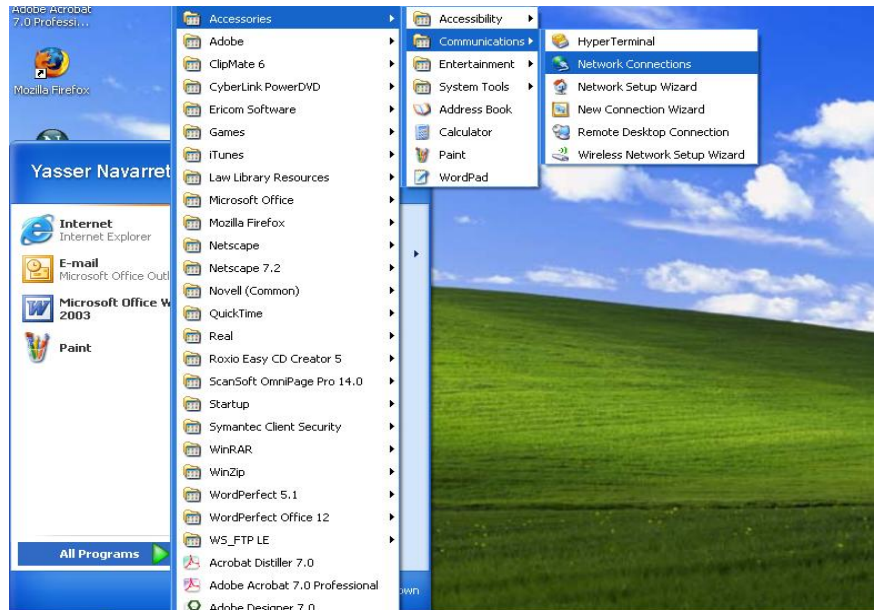
Leave this box selected to use remote dial-up access.

By clicking "Submit Changes", you agree to abide by the University's [Student Usage Agreement & Regulations](#). For more information, [visit the CaneNet Homepage](#).

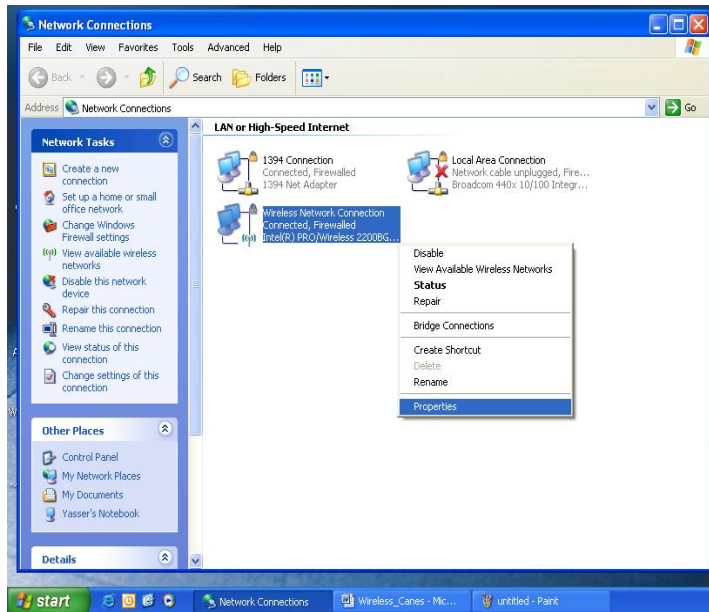
Submit Changes

CONNECTING TO A CANENET SERVICE

- Click on the **Start** Button.
- Click on **All Programs**, then **Accessories**, then **Communications**, then **Network Connections**.

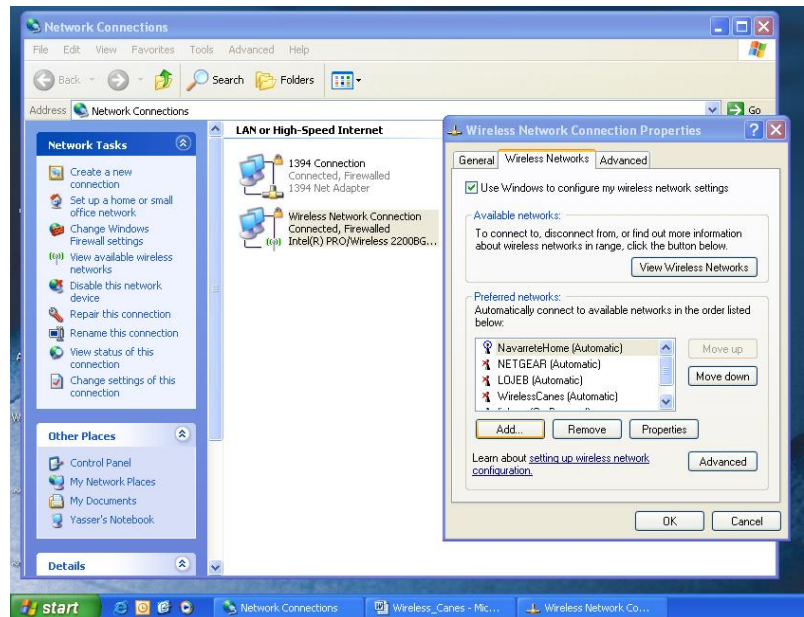


- This will bring up the **Network Connections** window.



- Right click on **Wireless Network Connection**, and click on **Properties**. (While at this step, please make sure that your **Wireless Network Connection** is **enabled**; you will know if it is if the **Disable** option appears.)

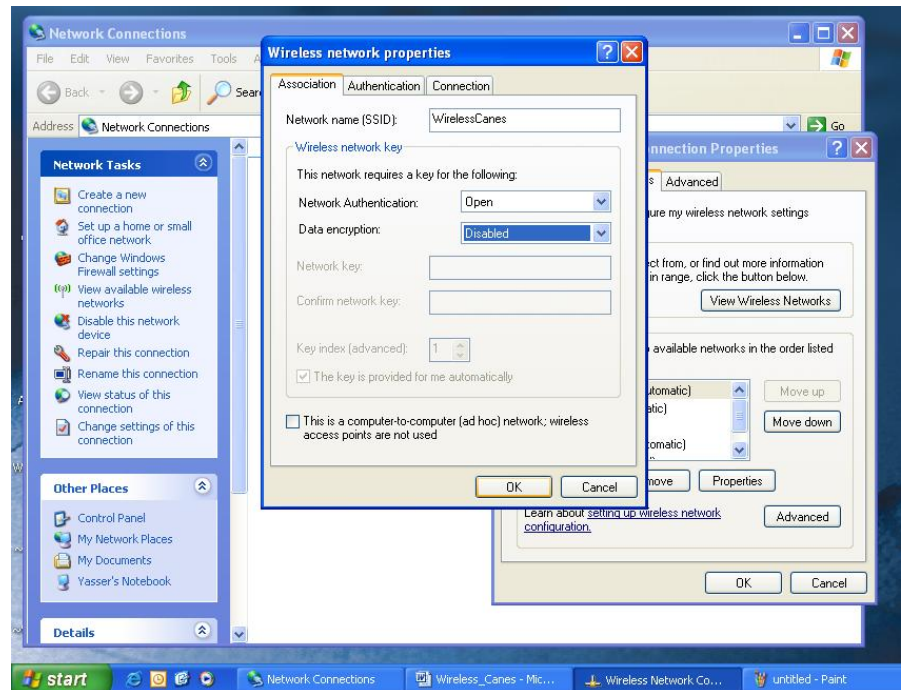
- On the **Wireless Networks** Tab, click on **Add**.



- In **Network Name (SSID)**, type “**WirelessCanes**”

(**WirelessCanes** is case-sensitive.)

- Make sure that the **Network Authentication** setting is set at “**Open**,” and that **Data encryption** is set at “**Disabled**.”



- Click on **OK** to exit out of **Wireless network properties**, click **OK** to exit out of **Wireless Network Connection Properties**, then exit out of **Network Connections**.
- Restart your computer. **WirelessCanes** should now be in enabled.