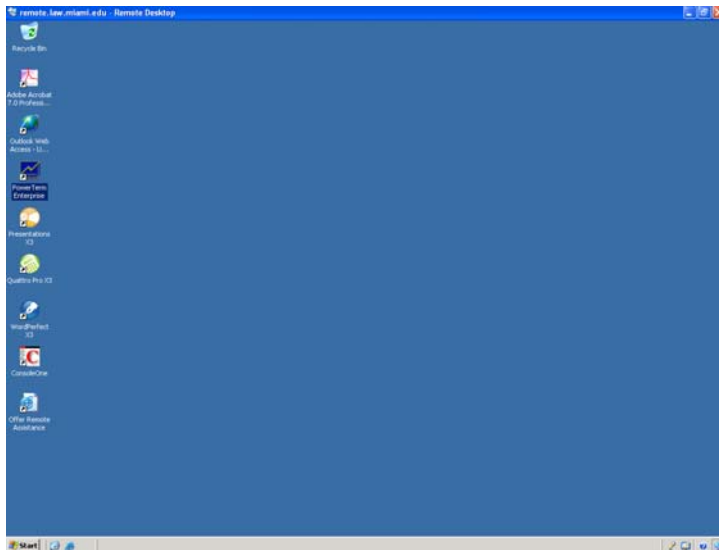


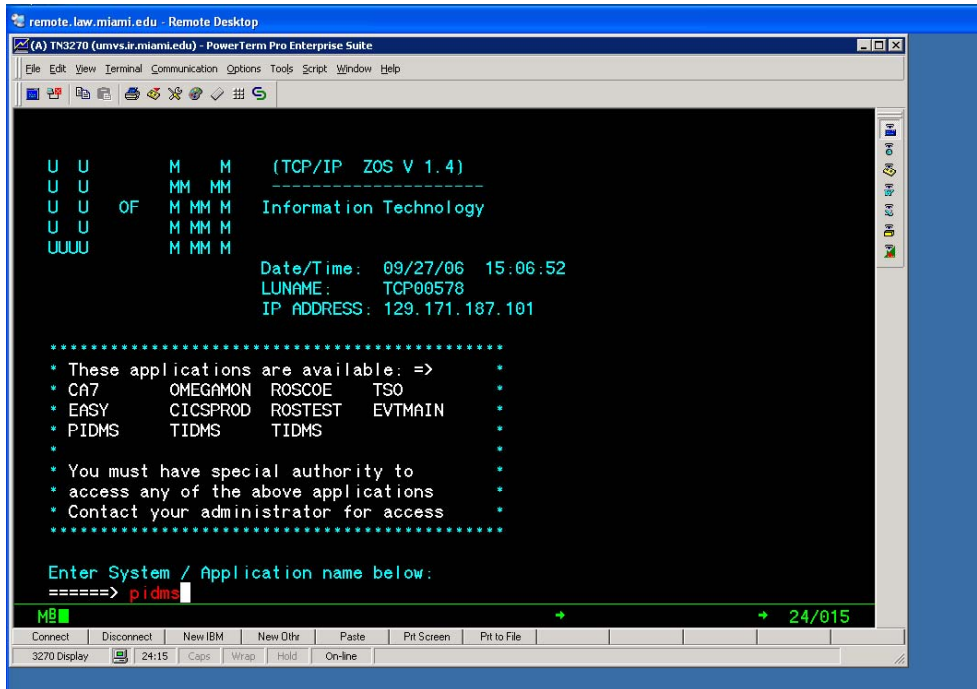
1. Once you have successfully logged into your profile using remote.law.miami.edu, double-click on the **PowerTerm Enterprise** application on your desktop.



2. While the **PowerTerm Enterprise** application loads, you may receive the following alert dialog box. Disregard it as **PowerTerm** will load shortly after.



3. Type in **pidms** and hit the **Enter** key located in the number pad.



4. Now, login as you normally would when accessing PIDMS.

